

OFFICE FOR LEASE

Pacific Corporate Center

15862 SW 72nd Ave, Suite 200, Portland, OR 97224
Building A



Key Features



9,558 sq. ft. office

Walkable environment
offering a variety of
amenities including rotating
food trucks, Starbucks and
Gold's Gym

Immediate access to I-5

**Great exposure at
intersection**

**Newly updated
landscaping**

**Lease Rate:
\$30.00/sq. ft.
full service**

Jake Bigby
jakeb@pactrust.com

Caitlin Knecht
caitlink@pactrust.com

503.624.6300

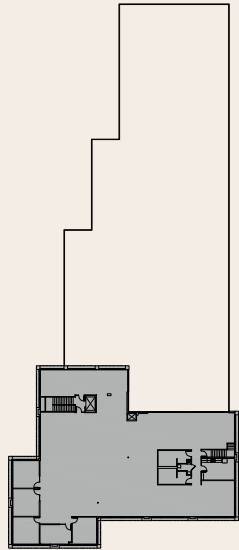
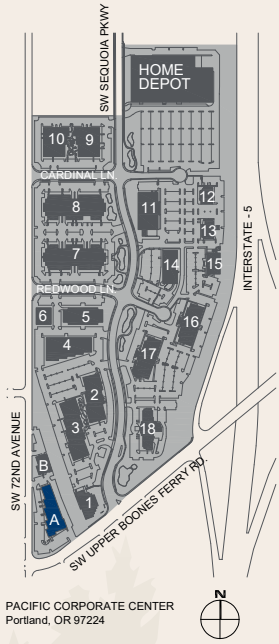
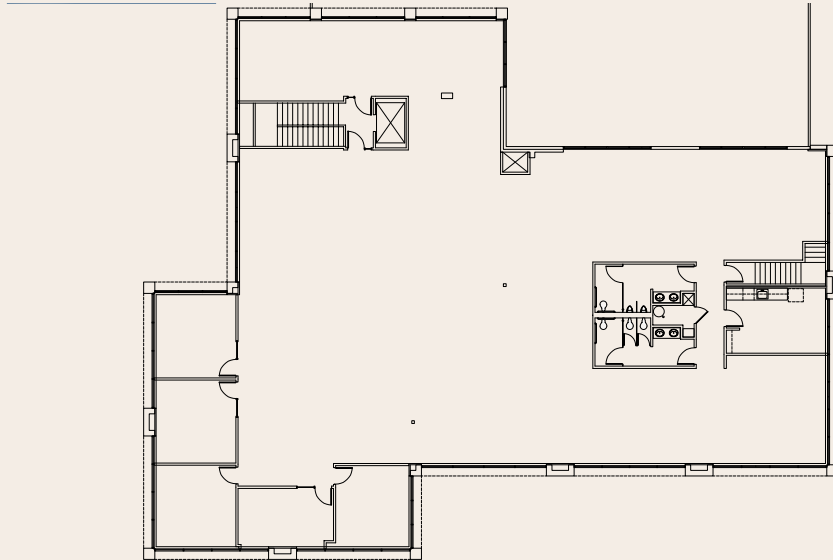
Owned & Managed by

PACTRUST

Space Plan

15862 SW 72nd Ave, Suite 200, Portland, OR 97224

9,558 Sq. Ft.



BUILDING PLAN

Jake Bigby
jakeb@pactrust.com

Caitlin Knecht
caitlink@pactrust.com

503.624.6300
www.PacTrust.com